



Turnitin Guidelines for Students

What is Turnitin?

Turnitin is a software that takes your written assignment and compares it with internet resources, books, articles and the Turnitin database of student papers. After it makes a comparison, it generates a **Turnitin Similarity Score percentage** that tells you how much of your writing matches other sources and a more detailed **Turnitin Originality Report** that highlights all the text that matches other sources, and, if applicable, gives you links to those sources.

How Turnitin can help you

- Improve your writing
- Help you paraphrase or identify where you need to properly quote
- If you forgot to cite something, it can help you identify where you need to add a citation in and where the source is
- Get a better mark!

Turnitin Use at Saskatchewan Polytechnic and Privacy

All classes that will use Turnitin for Brightspace Dropbox will include a notification in the course syllabus.

All files submitted to a Turnitin Dropbox in Brightspace will be stored on the Turnitin server, which is based in the United States of America.¹ Your paper will then contribute to the database that Turnitin uses to compare other students' works.

Turnitin makes a 'fingerprint' of your written work, which acts as a digital code that alerts others that there is similar content from your work. This also means that your papers cannot be sold to others. You retain the copyright and your identity remains private.²

If you do not wish to use the software, you have up until 7 calendar days prior to the due date of the first assignment that uses Turnitin to notify your instructor and to discuss alternative supports available to you at Sask Polytech. Otherwise, all assignments will be submitted to a Turnitin Dropbox on Brightspace.

¹ https://help.turnitin.com/Privacy_and_Security/Privacy_and_Security.htm

² https://help.turnitin.com/Privacy_and_Security/Privacy_and_Security.htm#Legal_FAQs



Turnitin Guidelines for Students

How to Submit Documents to Turnitin

Go to Assessments → Dropbox → Choose the folder for your assignment


Assignments that use Turnitin will be indicated in the folder.

Dropbox > Assignment 3

Assignment 3

▼ Hide Folder Information

Turnitin®

 This assignment will be submitted to Turnitin®.

Start Date

Jul 30, 2019 9:35 AM

Due Date

Dec 31, 2019 3:35 PM

Submit Assignment

Note:

You have already submitted to this folder. By submitting again, you will overwrite your previous submissions.

Files to submit *

(0) file(s) to submit

After uploading, you must click Submit to complete the submission.

Add a File

Record Audio



Turnitin Guidelines for Students

Find the file you want to submit and add it.

Add a File - Turnitin Integration Test - Saskatchewan Polytechnic ×

- My Computer ➤
- My Locker ➤
- Group Locker ➤
- OneDrive Files ➤

Once you upload a file and submit it, it may take a few minutes, but you should get your Similarity score and Originality report fairly instantly. If you go back to your Dropbox Folders, you should see your submissions for that assignment. **Click on the submissions number.**

Dropbox Folders

[Help](#)

[View History](#)

Folder	Score	Submissions	Feedback	Due Date
No Category				
Assignment 1		0	-	
Assignment 2		0	-	
test		0	-	
Assignment 3		2	-	Dec 31, 2019 3:35 PM



Turnitin Guidelines for Students

Here you can see your **Similarity Score** – or what percentage of your paper was found to be similar to other sources. You can click on the percentage and it will take you to the detailed Originality Report. You should check through this report to fix any potential issues.

Submission History

Folder: Assignment 3 [Apply]

Assignment Type: Individual assignment

Submission ID	Submission(s)	Turnitin® Similarity	Inline Feedback	Date Submitted
133836	✉ Mayak Unknown Disaster Turnitin Essay.docx (file deleted) Turnitin® Submission ID 1156586680			Jul 31, 2019 3:38 PM
133837	✉ Mayak Unknown Disaster Turnitin Essay.docx (29.66 KB) Turnitin® Submission ID 1156588153	81 %	View e-rater® grammar feedback	Jul 31, 2019 3:45 PM

Originality Report

If you **click on the number for your Similarity Score**, it will take you to a list of text in your paper that matches other sources from highest to lowest score. The sources can include: papers from other students, papers from other schools, internet resources, books, journals, magazines etc. You can **double click on the item you would like to look at** on the list on the right, or click on the number in text. This will show you the highlighted text, and where the text is in context within the original. If the text is from a paper written by a student, you will not be able to see the text.

Turnitin Instructor | Theatre Critique.docx

1 of 1

Theatre Critique

Turn the layer off and on

Similarity Score: 12

Filter Options

Exclusions

Download a copy

Match Overview

12%

Match 1 of 1

- 1 en.wikipedia.org Internet Source 7%
- 2 www.bartleby.com Internet Source 4%
- 3 puspitasaariew.blogspot... Internet Source 1%
- 4 Submitted to University... Student Paper 1%

en.wikipedia.org Internet Source

Misalliance Misalliance is a play written in 1909–1910 by George Bernard Shaw. The play takes place entirely on a single Saturday afternoon in the conservatory of a large country house in Hindhead, Surrey in Edwardian era England. It is a continuation of some of the ideas on marriage that he expressed in 1908 in his play, "Getting Married". It was also a continuation of some of his other ideas on Socialism, physical fitness, the Life Force, and

in society written through a play. I also learned that

1900s, or more specifically on May 31, 1909 and

house in Hindhead, Surrey, which I later learned is in

Misalliance is a play written in 1909–1910 by George Bernard Shaw. The play takes place entirely on a single Saturday afternoon in the conservatory of a large country house in Hindhead, Surrey in Edwardian era England. It is a continuation of some of the ideas on marriage that he expressed in 1908 in his play, *Getting Married*. It was also a continuation of some of his other ideas on Socialism, physical fitness, the Life Force, and 'The New Woman'.

Page: 1 of 5 Word Count: 1522

Text-only Report High Resolution On

How to use the Similarity Report to Improve your Paper

TURNITIN ORIGINALITY REPORT CHECKLIST

Go through this list to make sure your assignment has the lowest similarity score possible

- Is this a fact that I read somewhere?
- Did I want to quote this?
- Are there quotation marks around this quote?
- Do I need to paraphrase instead?
- I cannot say this any other way. For example: names of places, people, facts, definitions, technical terms, dates, titles, common terms
- Do I have an in-text citation (Author, Year) for my quote or paraphrase?
- Do I have a full citation for this in the References at the end?

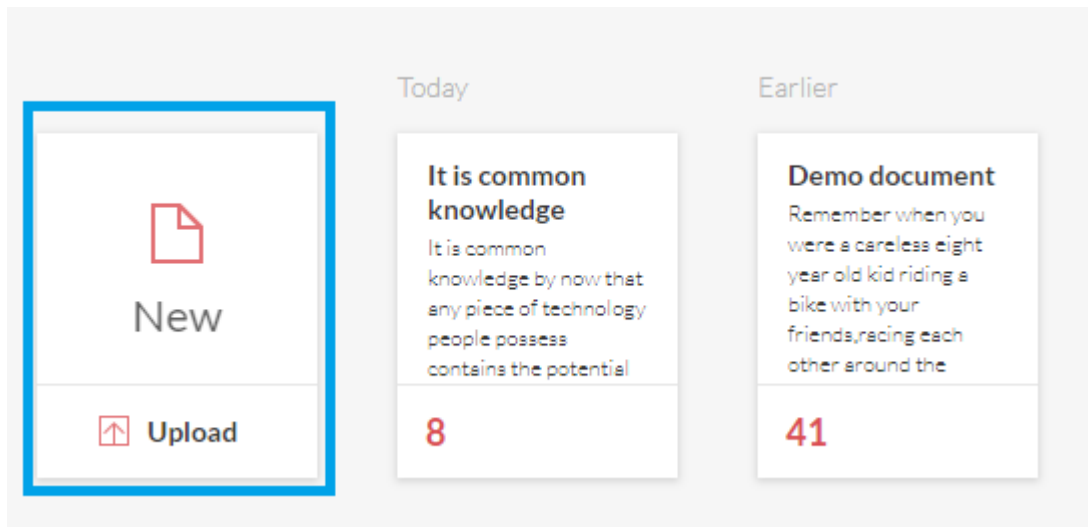


Turnitin Guidelines for Students

Help with Grammar: Grammarly

Create a free account at www.grammarly.com/signup

Upload your document



Grammarly will pick up common grammar errors in your paper, highlight them in red, and display them in the Alertspanel on the side. If you click on the item in the Alerts or in your text, it will suggest corrections for you to choose from.

Demo document

Remember when you were a careless eight year old kid riding a bike with your friends,racing each other around the neighborhood? Remember that feeling of absolute freedom as you felt the wind in your hair and the smile it put on your face? I never thought I would feel that way as a grown up,until my friends presented me a red brand-new bike. At first,I was a bit skeptical about the total idea of commuting by bike. One morning a couple of days later,I changed completely my mind. I was stuck at a traffic jam and saw in my rear mirror a man in a suit riding a classy bike with his laptop case in one hand and a handlebar in the other. I figured out it would take him about 15 minutes to get to the office while I was still sitting in my car and waiting for the cars in line

51 All alerts

• up, · Remove the comma

• ,until · Add a space

• ,I · Add a space

• ,I · Add a space

• CORRECTNESS: GRAMMAR

at → in

It appears that the preposition **at** may be incorrect in this context. Consider changing it.



Turnitin Guidelines for Students

Resubmitting to Turnitin Dropbox

You may resubmit your paper up to 3 times and get an instant Originality Report to work with. After 3 submissions, you will have to wait 24 hours to get a new report. However, you can still resubmit as many times as you need until the Due Date. Your submission will overwrite previous copies and Turnitin will keep only the most recent copy.

Submit Assignment

Note:

You have already submitted to this folder. By submitting again, you will overwrite your previous submissions.

Files to submit *

(1) file(s) to submit

After uploading, you must click Submit to complete the submission.

Add a File

Record Audio

Mayak Unknown Disaster Turnitin Essay.docx (29.66 KB) X

Source: My Computer

Comments

Overwrite

Cancel



Turnitin Guidelines for Students

Turnitin Help for Students

Turnitin Tuesdays sessions are offered live on Zoom throughout the semester by Heather Touet and Joel Blechinger to help students understand Turnitin.

Check the Sask Polytech Library’s News section for a link to all the Turnitin Tuesdays on offer.

You will need to navigate to the specific date that you want to attend in order to register and then receive the Zoom link (via email) for your specific date’s session.



Turnitin Tuesdays Online



Understanding your Report:

- learn the rules and conventions of citation and referencing;
- review and identify errors in your work;
- correct errors before you submit assignments.

Related LibGuide: [Turnitin Support by Tasha Maddison](#)

Date: Tuesday, January 25, 2022 [Show more dates](#)

Time: 3:30pm - 4:30pm

Time Zone: Costa Rica, Guatemala, Honduras, Saskatchewan ([change](#))

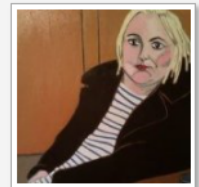
Online: This is an online event. Event URL will be sent via registration email.

Categories: Learning Services

Event Organizer



Joel Blechinger



Heather Touet

Registration (99 seats left)

A seat is being held for you. If you are idle on this page for 10 minutes, your seat can't be guaranteed and you may need to start over.

Registration is required for this event.

* Required Field

Full Name *

Email *
Enter @saskpolytech.ca addresses only

What program are you in? *

What class do you need help with? *

Please provide any other details about what you need help with. *

More events like this...

« **January 2022** »

S	M	T	W	T	F	S
						1
2	3	4	5	6	7	8
9	10	11	12	13	14	15
16	17	18	19	20	21	22
23	24	25	26	27	28	29
30	31					

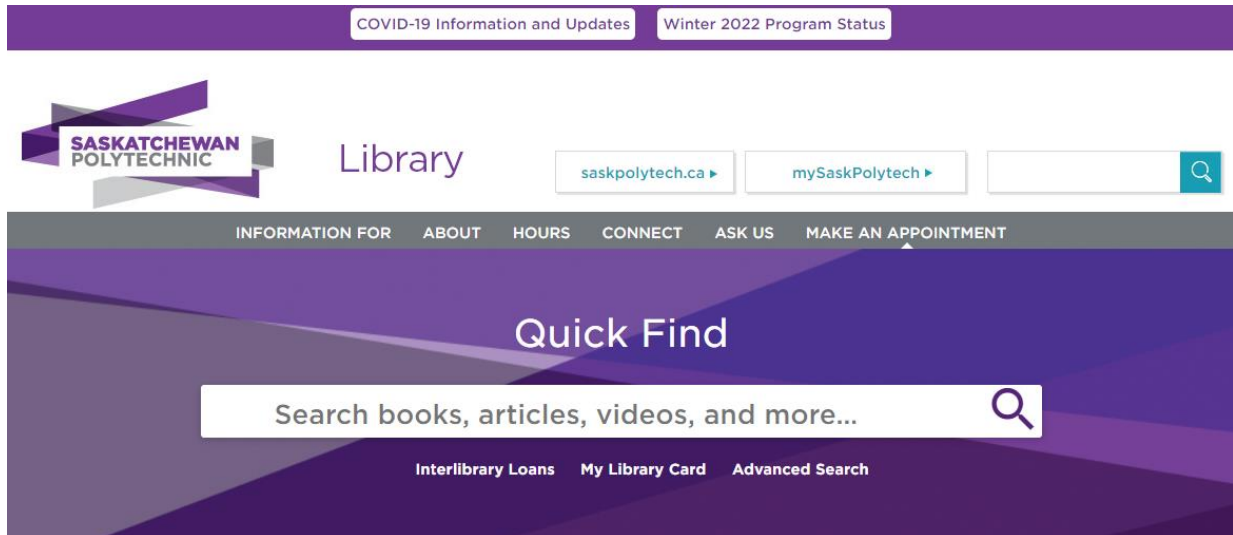
Upcoming Events:

- [Office Administration BCOM Study Hall](#)
Tuesday, January 11, 2022 12:15pm
- [Turnitin Tuesdays](#)
Tuesday, January 11, 2022 3:30pm
- [Office Administration BCOM Study Hall](#)
Wednesday, January 12, 2022 3:30pm
- [Office Started Online](#)

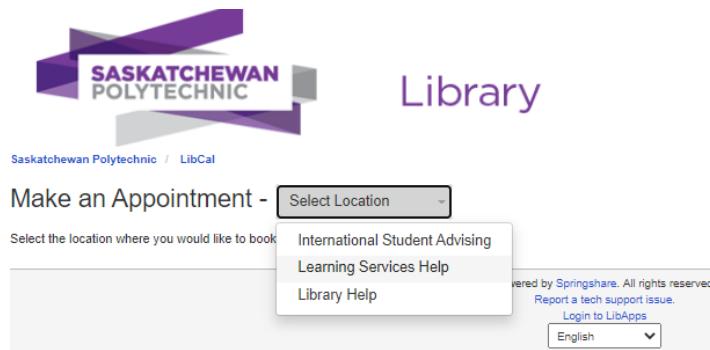


Turnitin Guidelines for Students

1. To access Turnitin help outside of Turnitin Tuesdays, go to the Sask Polytech Library website (library.saskpolytech.ca) and select MAKE AN APPOINTMENT from the top menu:



2. In the new tab opened by the MAKE AN APPOINTMENT link, click the Select Location drop-down and choose Learning Services Help:



3. Choose Writing Support from the Select a staff member options, and choose the length of your appointment, and your staff member preference (if you have a staff member preference):

▼ Writing Support

45 minutes (45 minutes) ▼

No preference

Kelsi Murrow (Moose Jaw Campus or Online) ⓘ

Logan Huard (Idylwyld Campus or Online) ⓘ

Robert Regier (Idylwyld Campus or Online) ⓘ

Jan Keays (Prince Albert Campus or online) ⓘ

Louise Collins (Online Only) ⓘ

Della Konkin (Avenue W Campus or Online) ⓘ

Dawna Ross (Regina Campus or Online) ⓘ

Kevin DeCorby (Moose Jaw Campus or Online) ⓘ

Heather Touet (Regina Campus or Online) ⓘ

Susan Healey (Idylwyld Campus or Online) ⓘ



Turnitin Guidelines for Students

4. Next, choose the date and time that work best for you:

2. Select Date:

Su	Mo	Tu	We	Th	Fr	Sa
						1
2	3	4	5	6	7	8
9	10	11	12	13	14	15
16	17	18	19	20	21	22
23	24	25	26	27	28	29
30	31					

3. Select Time:

Tuesday, January 11, 2022

Time Zone: Costa Rica, Guatemala, Honduras, Saskatchewan
([change](#))

11:00am	1:00pm	1:30pm
2:00pm	2:30pm	
Continue		

5. Finally, fill out your details and indicate that you need help with Turnitin:

Appointment Details

Appointment with: Heather Touet (Regina Campus or Online)
Date: Tuesday, January 11, 2022
Start Time: 11:00am
Time Zone: Costa Rica, Guatemala, Honduras, Saskatchewan
Type: 45 minutes
Location: Learning Services Help
Directions: Library Room 207.12.3 (Regina Campus)

This is an online appointment. Meeting URL will be displayed on the confirmation page and sent in the email confirmation.

[Change Appointment Details](#)

Your Details

* is required

Full Name *

Email *

Enter @saskpolytech.ca addresses only

What type of appointment are you booking? *

What program are you in? *

What class do you need help with? *

Please provide any other details about what you need help with. *

Please upload any supporting documents related to your assignment.



Click to choose files or drag them here.
Maximum file size: 20.0 MB

[Clear Files](#)

Confirm Appointment



Turnitin Guidelines for Students

Learning Services Help with Writing

Heather Touet

toueth@saskpolytech.ca

(306) 775-7435

Kelsi Murrow

murrowk@saskpolytech.ca

Kevin DeCorby

Kevin.decorby@saskpolytech.ca

(306) 691-8510

Library Help with Research and Citations

Joel Blechinger, Technology Learner Support Centre (Room 4.239) (Moose Jaw Campus)

blechingerjo@saskpolytech.ca

(306) 691-8227